



NEPAPAC



Afree Foundation

Areas Of Focus



Juvenile Crime Prevention

Consistent engagement reduces idle time, which is often linked to delinquency



Environmental advocacy

Community pride discourages vandalism and illegal dumping.

NEPAPAC advocates at the municipal and state level.



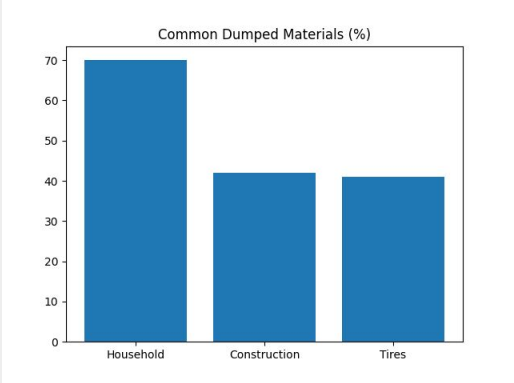
Education & Technology

Mentorship and peer leadership strengthen decision-making and self-worth.

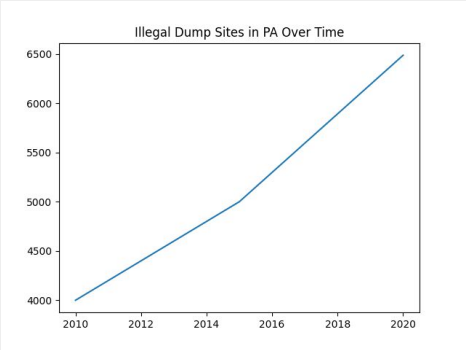
NEPAPAC offers two education programs:

**Free afterschool program
Summer SCHEMA camp**

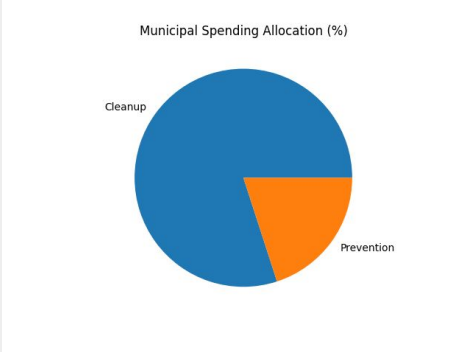
Current stats...



Common dumped materials



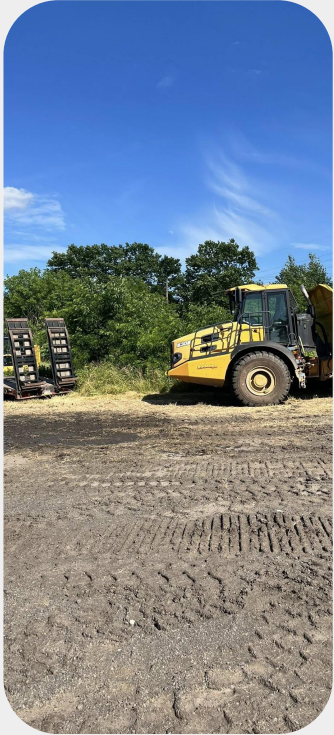
Illegal Dump sites in Pa



Municipal \$ allocated

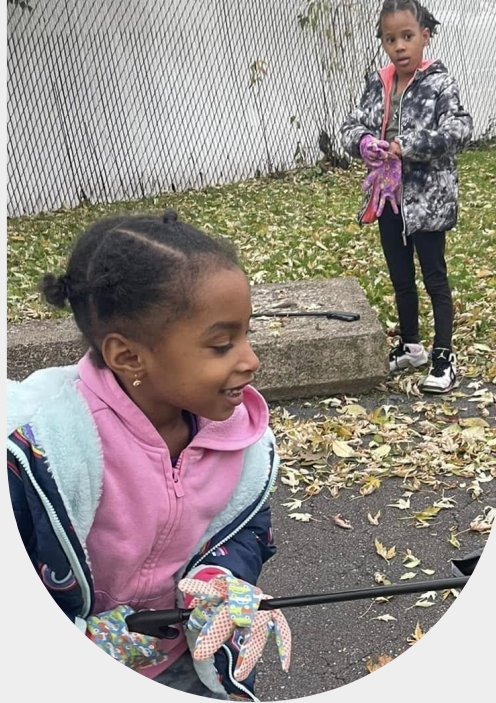
Strongest cleanup record in Lackawanna county

Over 23 cleanups per year!



Fun facts

- Our cleanups are led by children.
- Administrative duties are led by college and highschool students.
- We've done approximately 114 cleanups in the last 5 years.
- Our cleanups include curb cleanup, riverside, parks, vacant and private lots.
- NEPAPAC has been working with the city of Scranton for 6 years.
- Joined the environmental justice board for the DEP in 2022.
- Joined the City of Scranton Waste and Recycling committee in 2024



Structural change...



Aligning city resources with community impact

In 2023 worked with the city of Scranton to install garbage cans along main st. These cans are used to house trash collected by community orgs and collected by the city of Scranton.



THE UNIVERSITY OF
SCRANTON
A JESUIT UNIVERSITY

Forming partnerships with universities

In 2022 NEPAPAC utilized its relationship with the black student unions of nepa to help organize and run the cleanup division of our programming. These students mentor the children so that they can become the future leaders.

In 2024 NEPAPAC joined the City of Scranton environmental justice board as their waste and recycling Committee. NEPAPAC is working to coordinate community gardens and composting programs to reduce waste before it reaches landfills and city streets.

Structural changes continued...



Technological advancement

- Collect soil samples
- Test for ph levels for gardens and composting



Incorporating health

- During the summer months we use our schema program to train students on how to use iot devices for data collection and measurements.
- This helps position students to use scientific methods to problem solve



Penn Enviro Screen

- Our students are trained on Penn Enviro tool as part of their course work.
- We use this system in order to help us target areas of interest.



NEPAPAC

Facilitating

HEALTHY INTERACTIONS



Afree Foundation⁸