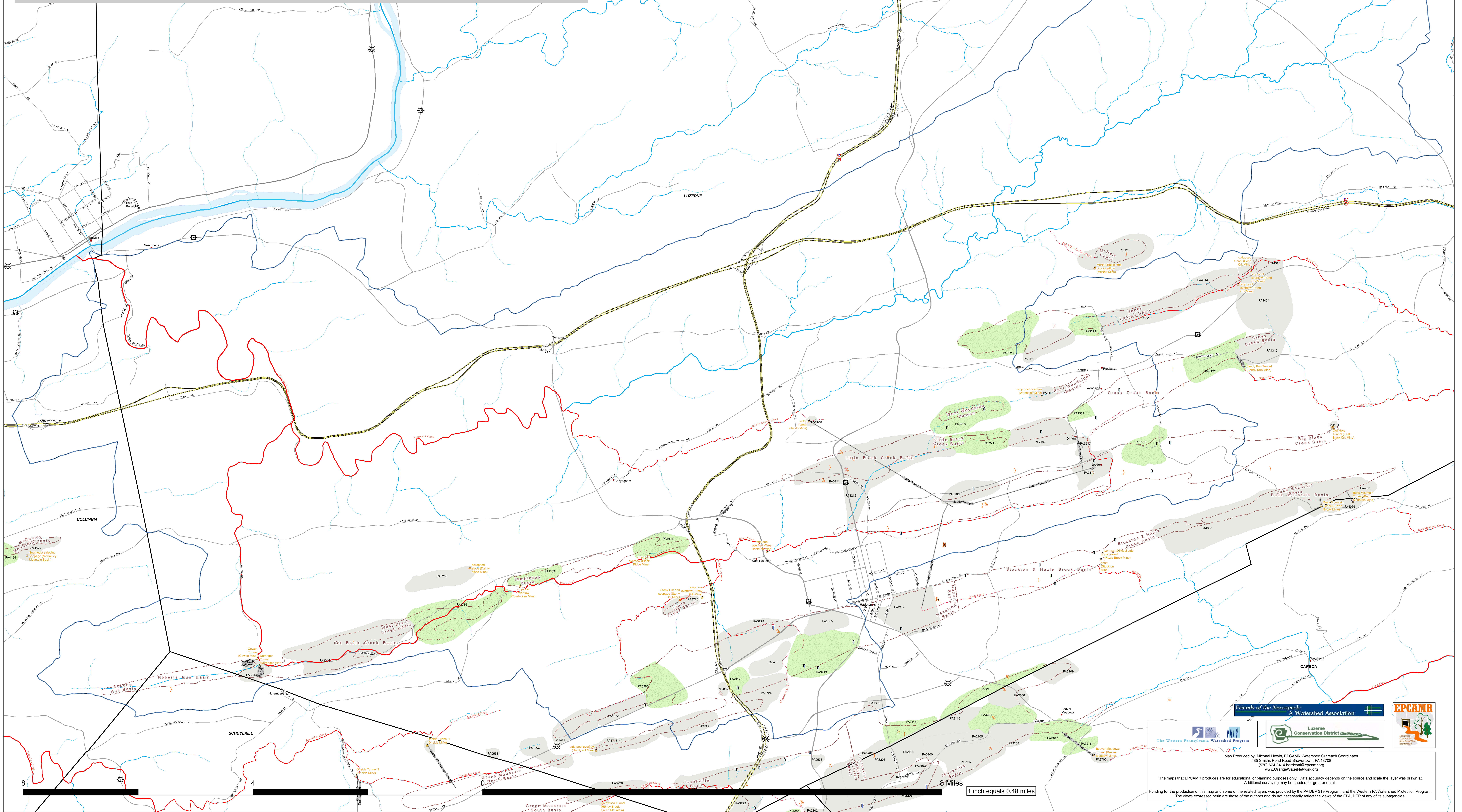
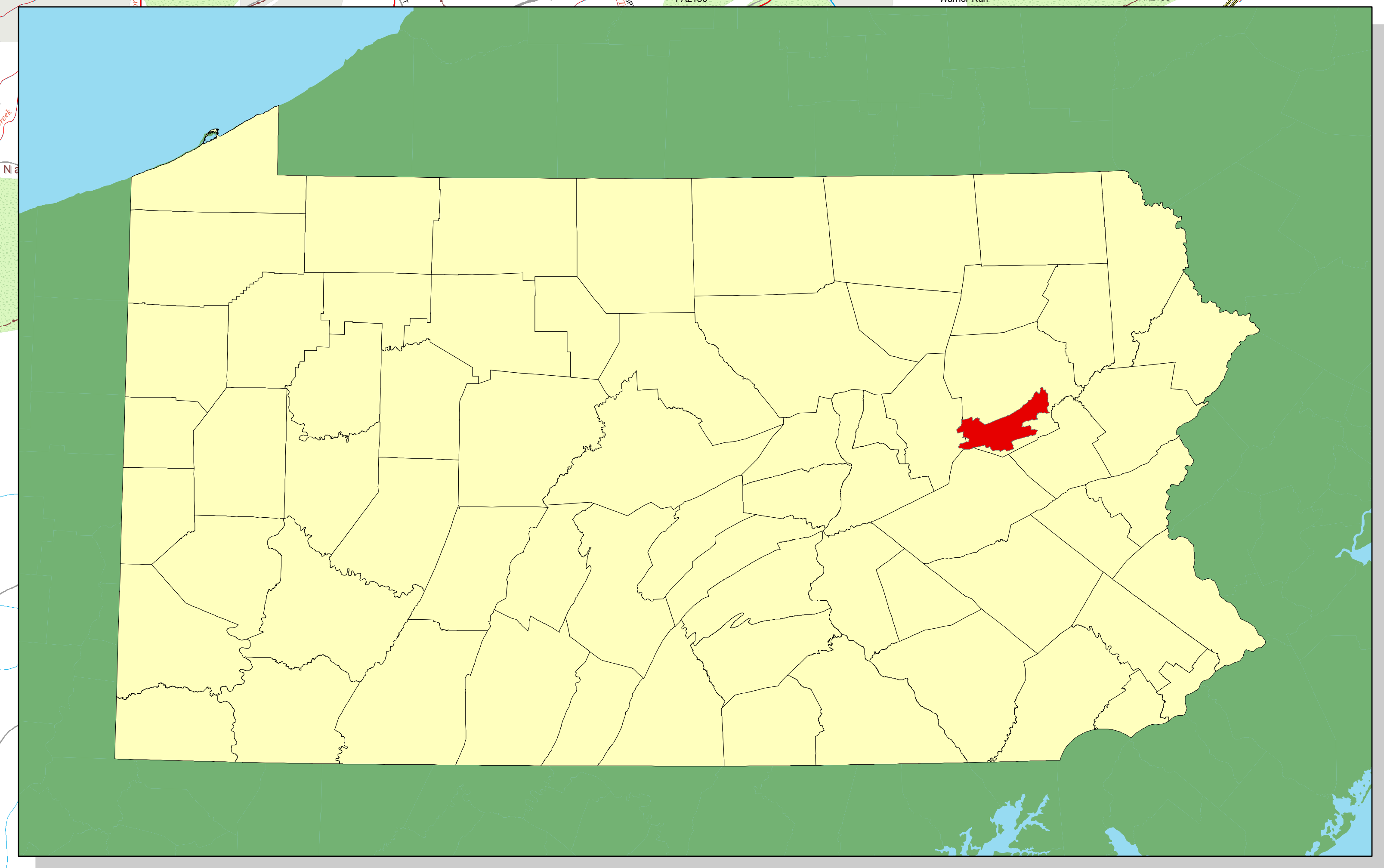


**Nescopeck Creek Watershed:
Abandoned Mine Land Related Problems**

Legend

- ★ Anthracite AMD Discharges (USGS)
- Mine Tunnels
- Infiltration Points**
- Type**
- Reclaimed
- Stream Flow Loss
- Surface Water Loss
- Active Mining Operations (DEP)**
- Facility Type**
-] DISCHARGE POINT, ABANDONED
-] DISCHARGE POINT, ACTIVE
-] DISCHARGE POINT, Active
-] DISCHARGE POINT, INACTIVE
-] DISCHARGE POINT, PROPOSED BUT NEVER MATERIALIZED
-] DISCHARGE POINT, RECLAMATION COMPLETED
- R MINERAL PREPARATION PLANT, ABANDONED
- R MINERAL PREPARATION PLANT, ACTIVE
- R MINERAL PREPARATION PLANT, INACTIVE
- R MINERAL PREPARATION PLANT, RECLAMATION COMPLETED
- POST MINING TRMT, ABANDONED
- POST MINING TRMT, ACTIVE
- 3 REFUSE DISPOSAL FACILITY, ABANDONED
- 3 REFUSE DISPOSAL FACILITY, ACTIVE
- 3 REFUSE DISPOSAL FACILITY, INACTIVE
- 3 REFUSE DISPOSAL FACILITY, RECLAMATION COMPLETED
- % REFUSE REPROCESSING, ABANDONED
- % REFUSE REPROCESSING, ACTIVE
- % REFUSE REPROCESSING, INACTIVE
- % REFUSE REPROCESSING, PROPOSED BUT NEVER MATERIALIZED
- % REFUSE REPROCESSING, RECLAMATION COMPLETED
-] SURFACE MINE, ABANDONED
-] SURFACE MINE, ACTIVE
-] SURFACE MINE, Active
-] SURFACE MINE, INACTIVE
-] SURFACE MINE, PROPOSED BUT NEVER MATERIALIZED
-] SURFACE MINE, RECLAMATION COMPLETED
- 3 UNDERGROUND MINE, ABANDONED
- 3 UNDERGROUND MINE, ACTIVE
- 3 UNDERGROUND MINE, INACTIVE
- 3 UNDERGROUND MINE, PROPOSED BUT NEVER MATERIALIZED
- 3 UNDERGROUND MINE, RECLAMATION COMPLETED
- Roads (PA DOT Maintained)**
- Traffic Type**
- Interstate
- US Route
- PA Route
- Other
- 303 (d) AMD (PA DEP BWM)**
- Not Listed
- Strahler Stream Order**
- 1
- 2
- 3
- 4
- 5
- 6
- 7
- Susquehanna River
- Underground Mine Pool Complex
- Watershed Boundary
- County Boundaries
- Abandoned Mine Land Problem Areas**
- DEP Work Started/Finished
- Unreclaimed



Map Produced by Michael Heatt, EPCAMR Watershed Outreach Coordinator
 485 Spruce Ford Road, Shawmut, PA 18708
 (570) 674-3414, hheatt@epcamr.org
 www.OrganizationsNetwork.org

The maps that EPCAMR produces are for educational or planning purposes only. Data accuracy depends on the source and scale the layer was drawn at. Additional surveying may be needed for greater detail.

Funding for the production of this map and some of the related layers was provided by the PA DEP 319 Program, and the Western PA Watershed Protection Program. The views expressed herein are those of the authors and do not necessarily reflect the views of the EPA, DEP, or any of its subagencies.