

Huntsville Creek Coldwater Heritage Plan

Culvert Assessments 07-07-2020



Culvert 1

- GPS: Lat: 41.29967, Long: -75.97472
- Crossing Code: xy4129972375974733
- Town/County: Jackson Township (Luzerne County), PA
- Road: Huntsville Road
- Location Description: Jackson Township Rec Park







Culvert 2

- GPS: Lat: 41.25361, Long: -75.91083
- Crossing Code: xy4125361075910830
- Town/County: Edwardsville Borough (Luzerne County), PA
- Road: Wyoming Avenue
- Location Description: Bridge next to Valenti Scrapyard, Edwardsville PA.







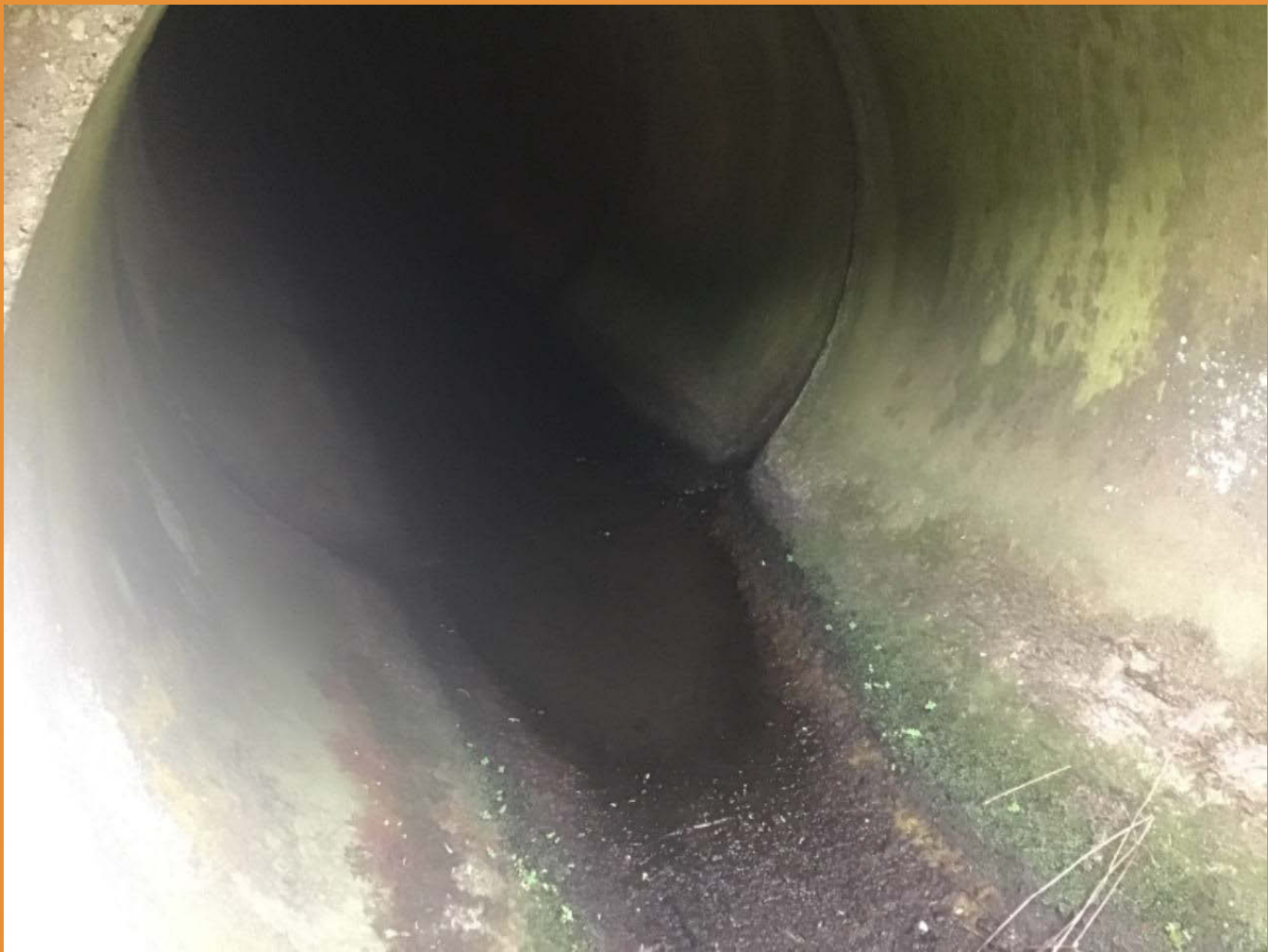
Culvert 3

- GPS: Lat: 41.29488, Long: -75.98830
- Crossing Code: xy4129481875988293
- Town/County: Jackson Township (Luzerne County), PA
- Road: Follies Road
- Location Description: Follies Road at intersection of Gates Road













Culvert 4

- GPS: Lat: 41.29429, Long: -75.98886
- Crossing Code: xy4129409875988699
- Town/County: Jackson Township (Luzerne County), PA
- Road: Gates Road
- Location Description: Unnamed tributary to Browns creek on Gates Road









Culvert 5

- GPS: Lat: 41.28028, Long: -75.89583
- Crossing Code: xy4128028075895830
- Town/County: Luzerne Borough (Luzerne County), PA
- Road: Route 309
- Location Description: Near impounding Basin behind fine wine good spirits









Culvert 6

- GPS: Lat: 41.28139, Long: -75.89583
- Crossing Code: xy4128139075895830
- Town/County: Luzerne Borough (Luzerne County), PA
- Road: Evans St
- Location Description: Bridge at Evans St









Culvert 7

- GPS: Lat: 41.28111, Long: -75.89556
- Crossing Code: xy4128111075895560
- Town/County: Luzerne Borough (Luzerne County), PA
- Road: Union St
- Location Description: Bridge below Union Street. Near RAK auto sales.









Culvert 8

- GPS: Lat: 41.28194, Long: -75.89556
- Crossing Code: xy4128194075895560
- Town/County: Luzerne Borough (Luzerne County), PA
- Road: Buckingham St
- Location Description: Bridge below Buckingham Street near Pro's Produce







Culvert 9

- GPS: Lat: 41.28500, Long: -75.89861
- Crossing Code: xy4128500075898610
- Town/County: Luzerne Borough (Luzerne County), PA
- Road: Main St
- Location Description: Bridge between Nicholas Truck and Teberio's Pizza











Culvert 10

- GPS: Lat: 41.29111, Long: -75.90806
- Crossing Code: xy4129111075908060
- Town/County: Luzerne Borough (Luzerne County), PA
- Road: Route 309
- Location Description: Culvert near Wasserott's

